

# Annie People

Member



National Association  
Of Fan Clubs

The Newsletter for Annie Fans

No. 51, May 1991

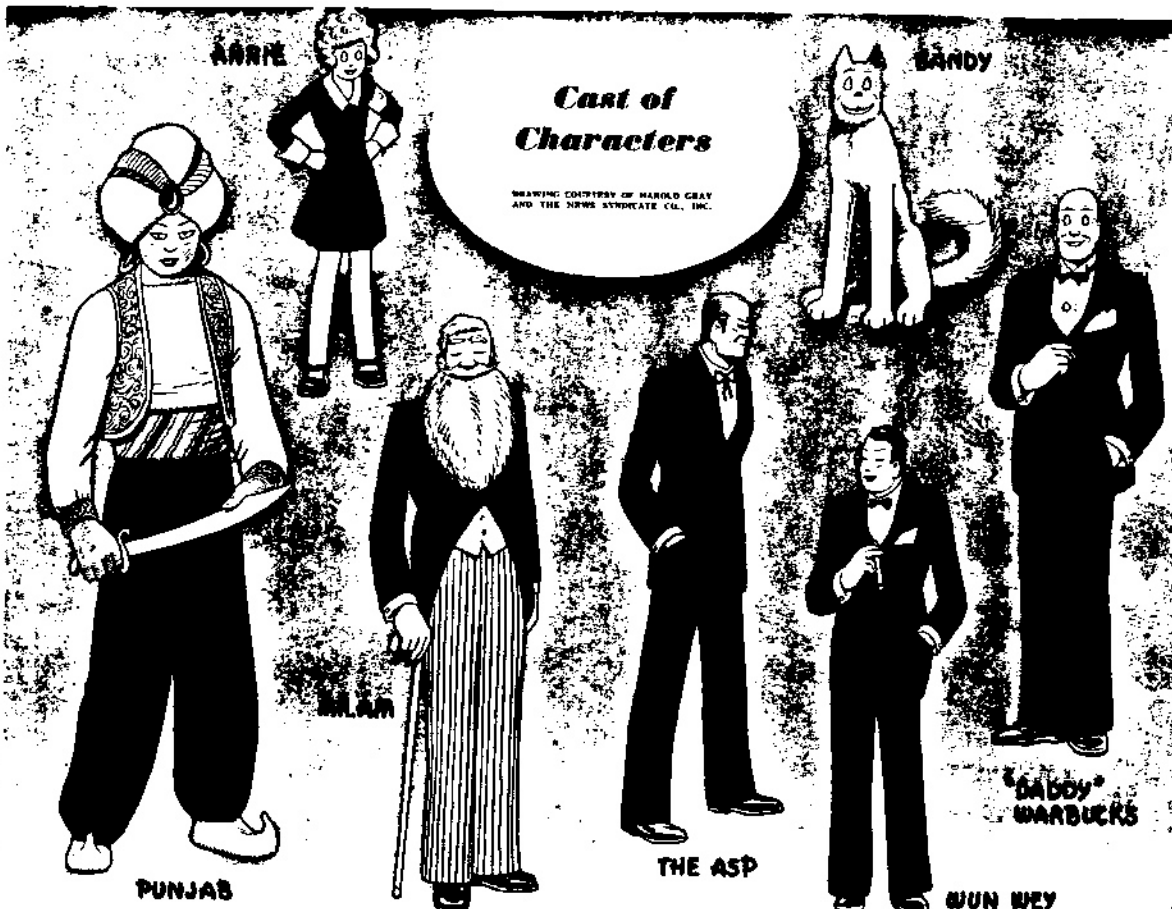
Published by Jon Merrill, 517 North Fenwick Street, Allentown, PA 18103

Artwork by Tricia Trozzi, co-editor and columnist

Contents copyright © 1991 by Jon Merrill for the contributors

Price: Free

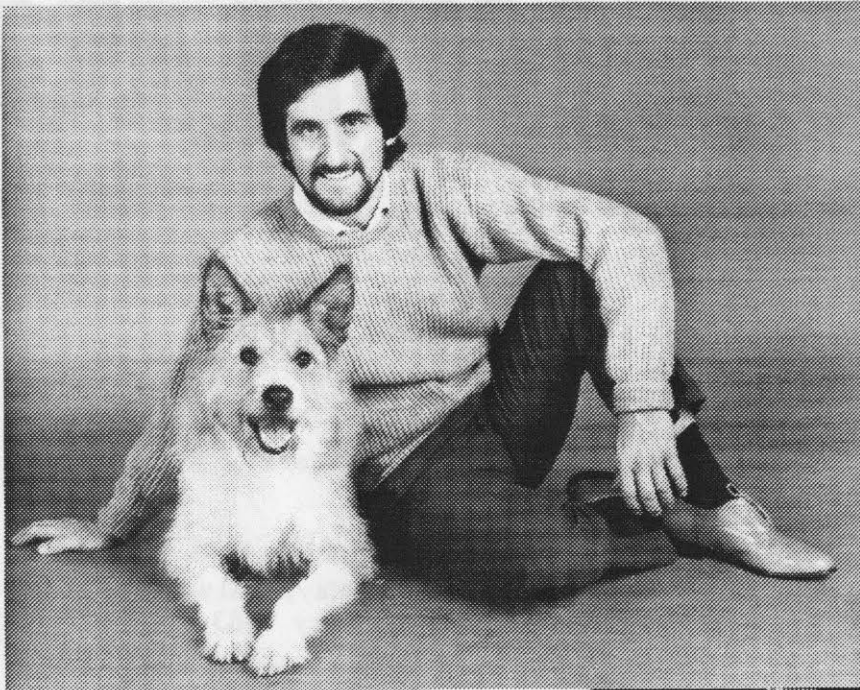
Annie People is published every other month in January, March, May, July, September, and November. Publication has been continuous since January 1983.



© Coronet, March 1943

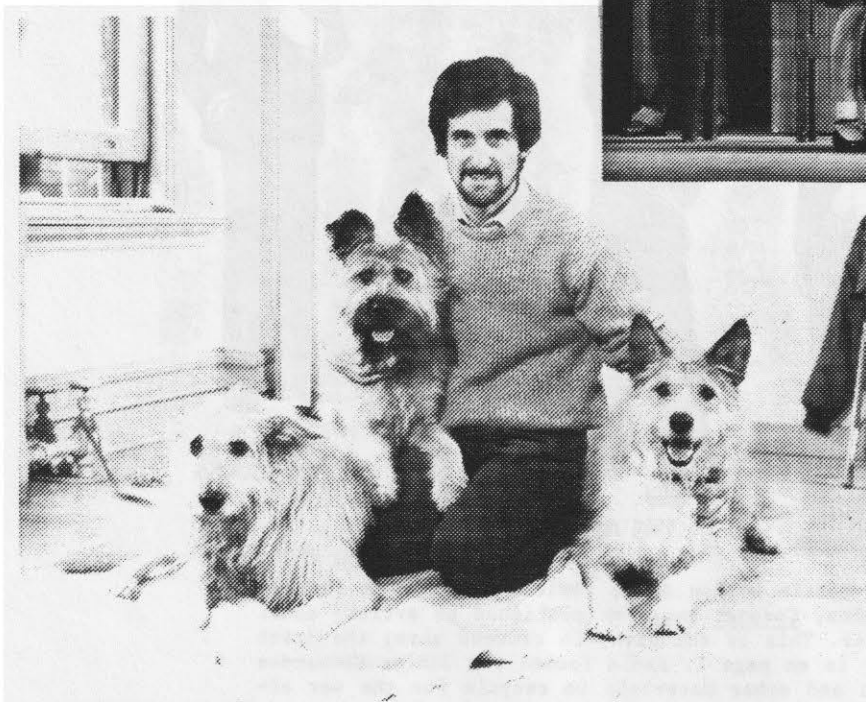
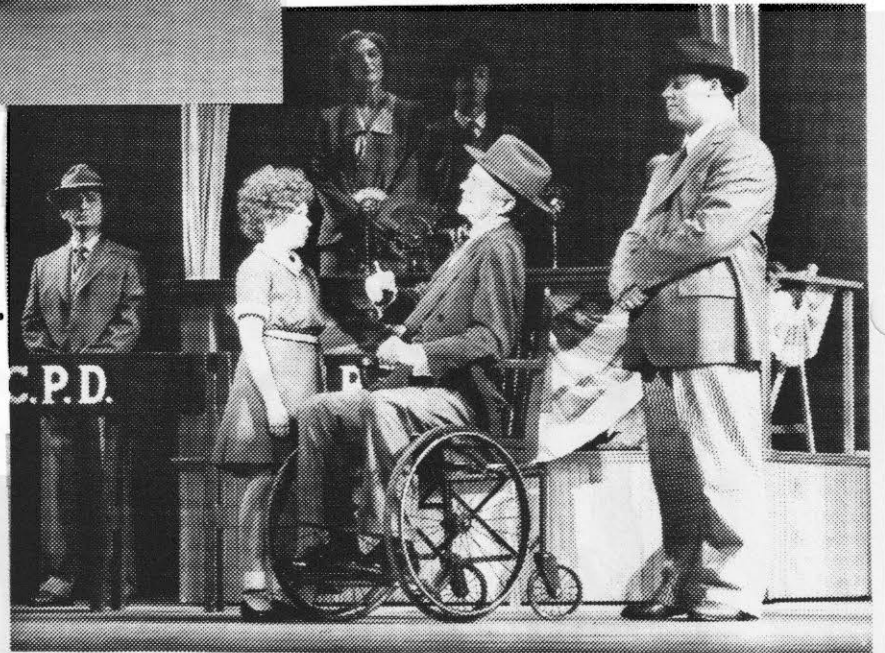
During World War II, when the Little Orphan Annie comic strip was in the sequence about the Junior Commandos, Coronet magazine published an article about Annie which included this poster. This is the back, in reduced size; the front of the poster, in normal size, is on page 7. Annie formed the Junior Commandos to go out and find scrap metal and other materials to recycle for the war effort, and the popularity of the strip inspired children all over the country to form real Junior Commandos clubs to help the war effort, just like Annie.

ANNIE 2: MISS HANNIGAN'S REVENGE  
Washington, D.C., Dec. 1989 - Jan. 1990



BEAU and BILL BERLONI

"When You Smile" - RAYMOND THORNE as President Roosevelt trying to cheer up "Annie" played by DANIELLE FINDLEY, except that this is not the "real" Annie; in this scene this is Kate McGuire, the "fake" Annie, pretending to be the "real" Annie! MARIAN SELDES is in the background, and T. J. MEYERS is at the right.



BILL BERLONI with, from left, Broadway's SANDY, MOULI (Beau's understudy), and BEAU

Photos by MARTHA SWOPE

# IS 'ANNIE' ORPHANED AGAIN?

## Revamped B'way sequel fails to find Daddy Warbucks

By JEREMY GERARD

**NEW YORK** For "Annie 2," it continues to be a hard-knocks life.

After a disastrous Washington tryout in December 1989, the "Annie" sequel was heavily revised by its enthusiastic creative team. But "Annie 2" still is searching for an extended family of backers, a Broadway opening and a happy ending. The new edition came up empty-handed after a series of backers auditions held here last month.

In a highly unusual move last week, the producers, who already have sunk \$5.6 million into the show, offered to return the rights to the show to the creative team. Under the plan, according to Lewis Allen, one of the general partners, investors in the show would have been paid off, the partnership would have been dissolved, and the creative team would be responsible for finding new producers.

Late last week, however, the creative team rejected the plan. It now is scheduled to meet March 5 with the partners to work out the next move. Allen is co-producer with Roger Berlind, Stephen Graham, Fifth Avenue Prods. and Margo Lion. The cre-

ative team includes director/lyricist Martin Charnin, book author Thomas Meehan and composer Charles Strouse.

The producers had hoped to raise an additional \$3 million from the February auditions. Allen said they have \$1.4 million left from an original \$7 million capitalization that included the Washington run and a workshop last June at Goodspeed-at-Chester, in Connecticut.

But the auditions proved stunningly unproductive. "It was not as good a reaction as we thought we'd get," Allen said. "I think it was partly the economic climate, partly the stigma on the production."

"Annie 2" has been considerably altered since the Washington version, which was bludgeoned by critics and rejected by audiences. Most notable is a radical change in tone from dark and cynical to bright and upbeat. Both the general partners and the creative team expressed confidence that the new, improved "Annie 2" has hit potential.

"I think the work was very good," Allen said. "It has almost all new music and goes back to the spirit of the original 'Annie.'"

The producers were facing a June deadline, by which time they had to have a production or

dissolve the partnership. One reason the auditions failed to generate new coin was because of obligations to the original investors. Under the difficult circumstances, the partners—all of them experienced Broadway hands—wanted to release the old investors.

But in following that course of action, Allen said, they would be legally precluded from going forward with new investors. So the partners agreed to relinquish their rights, as well. "I would love it if they could get it together," Allen said of the creative team. "The show could be a great success."

The creative team rejected the plan, said Charles Strouse, apparently feeling that the original partnership remains their best hope for getting "Annie 2" back on the boards. Even with the Persian Gulf war over and the possibility of an easing economic climate, they're reluctant to go back to square one.

So far, there's no animosity. "My impression is that they could raise the money in a second but they want to be loyal to their former investors," Strouse said. "That's a nice trait. But I know the show is going to go on, and I would really like it to be with the original producers. I want them to continue with it."

(ARTICLE IN VARIETY, MARCH 11, 1991, SUBMITTED BY DAVID POWERS)

New York - The creators of Annie 2 agreed last week to reclaim the rights to the revamped show and seek a new production partnership.

Under the agreement, according to lyricist and director Martin Charnin, the partnership formed by producers Lewis Allen and Roger Berlind to mount the show will be dissolved, and assets—including about \$1.4 million, as well as some sets and costumes from two earlier productions—will be distributed. The partners also include Stephen Graham, Fifth Avenue Prods. and Margo Lion Ltd.

As reported (Variety, March 4), the producers attempted two weeks ago to return the rights to the creative team (including composer Charles Strouse and author Thomas Meehan) after backers' auditions in February failed to produce fresh coin. The show had been vastly revamped and scaled down, Charnin said, since a flop tryout in December 1989, and was looking for \$3 million, having spent \$5.4 million of a \$7 million capitalization.

The creators rejected the proposal, but after an "amenable" discussion March 5, agreed to the distribution of assets and the idea of going it alone. The partners are precluded by law from further active involvement in the show.

"It was too big for its britches," Charnin said of Annie 2. A cast of 40 has been reduced to 21.

Charnin also said that the show could be done for under \$4 million and that there had been some interest from investors. The Annie 2 creators hope to raise the money by summer, go into rehearsal by Labor Day and open on Broadway by Thanksgiving.

-- Jeremy Gerard

# ★ Annie Stars Since Annie ... ★

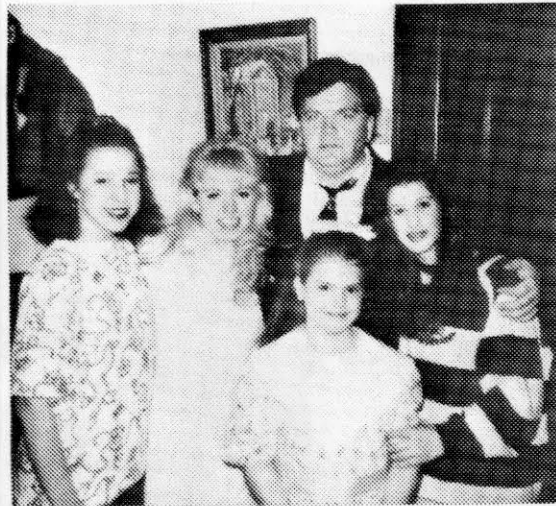
AILEEN QUINN played Kim McAfee in Bye Bye Birdie at the Fort Bragg Playhouse in Fayetteville, NC. This was the same theater where she played the title role in Annie and Dorothy in The Wizard Of Oz in the mid '80s. Fayetteville Birdie director Lee Yopp reported that none of the teenagers in the production had ever heard of Ed Sullivan. Speaking of Bye Bye Birdie, the Broadway musical, composed by CHARLES STROUSE and which enjoyed a long run thirty years ago, is reportedly looking at a revival on Broadway next season. This summer it will begin a tour in Seattle, starring Tommy Tune and ANN REINKING....ANDREA McARDLE starred in They're Playing Our Song at the Bucks County Playhouse in New Hope, PA in April and May. And another Broadway Annie, SARAH JESSICA PARKER, is currently Off-Broadway in The Substance Of Fire....In between tapings of Harry And The Hendersons, CAROL-ANN PLANTÉ did a photo layout on beauty tips in the August Tiger Beat....MARTIN CHARNIN's new musical about astronomer Galileo will get a summer tryout at Goodspeed-At-Chester in Connecticut, home of last year's Annie 2....ALYSSA MILANO narrated a documentary on the Disney Channel on the making of The Little Mermaid....LAUREN GAFFNEY has been in two productions in New York: Jules Feiffer's Grown-Ups, and Lynda Barry's The Good Times Are Killing Me. Also in the latter show was former Grace Farrell RUTH WILLIAMSON....HOLLY NEWMAN played the title role in High Bridge, NJ in April. She had played an Orphan in Convent Station, NJ last fall, as did her sister KRISY NEWMAN who was an Orphan (as well as numerous ensemble roles) in this production. Their real-life "Daddy" TOM NEWMAN was Oliver Warbucks, and mother CAROLYN NEWMAN was the producer. Carolyn founded the SKIT (Show Kids Invitational Theatre) group which consists of over a hundred young people from the area. In this production PAUL GOLDIE's dog DUFFY played Sandy. KRISTIN WARFIELD, who was Orphan Duffy in Belvidere, NJ three years ago with Krisy (Molly) and JESSICA SAMPIERI (Annie), moved up to the role of Lily St. Regis in the SKIT production. Kristin also recently starred in Anything Goes, also in High Bridge, NJ....CHARLES STROUSE composed the music for Nick And Nora, which will go into rehearsals in July in preparation for a November opening on Broadway....JENNIFER GLICK, Annie 2's July last year, was exceptional in her starring role as Little Red Riding Hood in Into The Woods in Boston in April....DEBBIE GIBSON's second single from Anything Is Possible is called "(This So-Called) Miracle." In early spring Debbie appeared on Regis and Kathie Lee and Arsenio Hall....The production of Anne Of Green Gables in Pontiac, MI directed by John Tonner (see article) was full of former Annies and Orphans: There were four former Annies: REBECCA BAHLING (Diana Barry), HOLLY SMITH (Tillie Boulter), MEREDITH JONES (Gracie Finley), and APRIL SMITH (Prissy Andrews). Former Annie Orphans in the production: MELISSA DeLAIRE (Lynn Marsh), HEIDI HERNANDEZ (Certie Pye), HILARY HERNANDEZ (Flora MacKenzie), LENORIS WILLIAMSON (Julia McLean), LE-ANNE GARLAND (Glenda Landry), ROBYN BULLER (Kathryn Watt). The title role of Anne Shirley was played by LISSA RENEE GOLDBERG, a former Molly. And former FDR opposite Rebecca was Melissa's dad DON DeLAIRE as Cecil the farmer....CINDI WINGET will play in her eleventh production of Annie this summer in Easton, Pennsylvania. The 17-year-old Annie veteran, who will once again play the title role, says regrettably, "This one will be my last"....GERRY McINTYRE, Annie 2: MHR's Punjab, has a leading role in the Caribbean musical Once On This Island currently playing on Broadway....REBECCA BAHLING played Dorothy in The Wizard Of Oz in Michigan in late April.... Birthdays: ROXANNE DUNDISH, 18 on Mar. 1; SHERRY DUNDISH, 18 on Mar. 1; THEDA STEMLER, 24 on Mar. 4; SUSAN LIPTON, 18 on Mar. 4; JULIE STEVENS, 21 on Mar. 22; SARAH JESSICA PARKER, 26 on Mar. 25; LISA LYNNE, 18 on Apr. 11; JENNIFER MAILLET, 20 on Apr. 16; SHARON JORDAN, 19 on Apr. 22; CAROL BURNETT, 57 on Apr. 26; STEPHANIE WINTERS, 21 on May 1; SHELLEY BRUCE, 26 on May 5; ALBERT FINNEY, 55 on May 9; ARLENE KULIS, 19 on May 12; PATTI GILBERT, 22 on May 23; CHARLES STROUSE, 63 on June 7; DEBORAH WEBSTER, 22 on June 11; NATALIA HARRIS, 12 on June 12; LOREN KAUFMAN, 18 on June 16; STEPHANIE KAE SEELEY, 20 on June 24; AILEEN QUINN, 20 on June 28; DANIELLE BRISEBOIS, 22 on June 28.

## ANNE OF GREEN GABLES

Enthusiastic Annie fan and AP reader and contributor John Tonner directed the musical Anne Of Green Gables for the Pontiac Theatre IV group in Pontiac, Michigan in March. The series of Anne Of Green Gables books written in the early 20th century by Lucy Maud Montgomery are among the best loved of all time among young people, but not very many fans of the Anne Shirley character know of the existence of the musical, which was written about 25 years ago. The musical is performed extensively in tours around Canada every year but is almost completely unknown in the United States, and for John, a lifelong fan and collector of L. M. Montgomery's works, to bring Anne to his theater group was a dream realized after many years.

Anne Shirley is a poor, red-haired orphan who comes to Prince Edward Island in Canada to live with an elderly brother and sister, named Matthew and Marilla Cuthbert. Anne at first has a hard time adjusting because of her quick temper and her endlessly talkative ways, but she eventually wins over the love and respect of the whole town of Avonlea. Many of you may have seen the movie starring Megan Follows on PBS or the Disney Channel, which has the same basic plot as the stage musical.

Producers who have had success with Annie and have theater groups with lots of children should be aware of the Anne Of Green Gables musical. There are several male and female leads for teenagers, but there are also numerous chorus roles with a lot of dancing for kids, both boys and girls, since several of the musical numbers center around schoolroom scenes. A great many of the children in John's production were former Annies and Orphans in Annie, and they all loved being in Anne, another story about an orphan with red hair. In addition, Pontiac Theatre IV said the crowds at their performances of Anne were among their biggest ever. Give it a try in your theater group!



Pontiac Theatre IV's director John Tonner with his four Michigan former Annies who were in his Anne Of Green Gables: REBECCA BAHLING (left) was Annie in Pontiac Theatre IV's 1988 Annie in Pontiac, MI; APRIL SMITH did it in Birmingham, MI, MEREDITH JONES in Wyandotte, MI, and HOLLY SMITH in Fenton, MI.

## ANNIE 2's NEW GRACE FARRELL



DOLLY FOX: Hello, Annie.

## A star is being born

Fairy tales do come true. Just ask Dolly Fox. The singer, toiling in relative obscurity, waiting for her big break, has been "discovered" quite by accident by the Broadway producer Martin Charnin. Now she's set for a starring role in "Annie 2."

"Martin Charnin just happened to hear me sing one night at Tatou. He was with Gore Vidal and VH-1 president Ed Bennett. Right after I got off stage, he asked me to audition," Miss Fox said. She's been singing every Monday night at the East 50th Street nightclub.

The sultry soprano landed the role of Grace and has performed in three recent shows for poten-

tial investors. If the financial backing comes through, Miss Fox is Broadway-bound.

The musical was headed to Broadway a year ago, but the reviews in Washington, where it opened, were bad enough to convince the producers to rework it.

Miss Fox, who once made a living painting temporary tattoos on nightclub revelers, is convinced that the new and improved "Annie 2" will be a hit, and she's on cloud nine. "I've got the best song in the show," she told Page 6. "I'm really excited. It's like a movie. It's like Lana Turner at the soda fountain."



Jennifer Glick  
Into The Woods  
 Boston, MA



Jaime Bronstein (Annie)  
 Glencoe, IL



Cynthia Moser  
 Alliance, OH



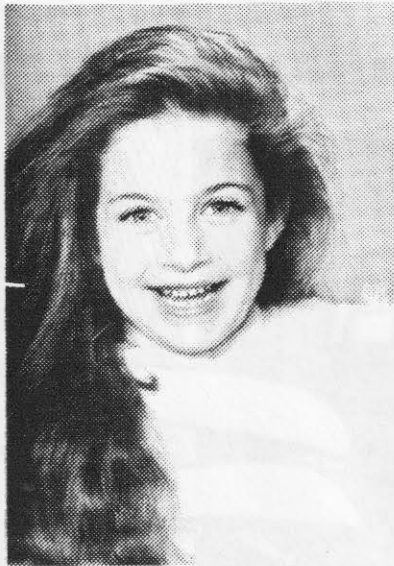
HIGH BRIDGE, NJ - Top row, Jennifer Carmella, Kelly Hughes, Krisy Newman, Erin Hall, Mary Kathryn Haas; middle row, Kristeen Lehnert, Leigh Ann Magnatta, Kira Wentworth, Kim Gold; bottom row, Lauren Kent, Amy Kartman, Anne Marie Parent, Erica Szoc, Sara Carmella; front, Holly Newman (Annie)

WHY SCATTER OUR FIRE, BY HAVIN' DOZENS O' WAR AIMS? JUST ONE IS PLENTY, FOR TH' JUNIOR COMMANDOS! HANG ENOUGH HITLERS AN' HIROHITOS SO THAT NEVER AGAIN WILL WE HAVE TO HANG GOLD STARS IN THE WINDOWS OF AMERICA!.... EH, SANDY?

ARF!

HAROLD GRAY

*Orphan Annie's  
Junior Commando  
Poster*



SARAH BARKOFF, 8, of Dearborn Heights, Michigan has been chosen to play the role of young Cosette in the 3rd National Touring Company of Les Misérables. The tour will open in San José, California in June and swing back through Detroit by Christmas. This will be Sarah's second tour; she toured in The Sound Of Music with Annie 2's Lauren Gaffney in 1989. Her first stage show was when she played Molly in Annie in Michigan when she was five years old. Congratulations, Sarah, and lots of luck on the tour!



HIGH BRIDGE, NJ - KRISTIN WARFIELD (Lily St. Regis), DARREN IRVING (Drake). They also played the roles of David and Margaret Bennett in the beginning of the play: As the Overture played, they came up the aisle in the dark and left baby "Annie" on the steps of the Orphanage. This interesting variation for the play was their idea, and the audience loved it!

---

Jon Merrill  
Annie People  
517 North Fenwick Street  
Allentown, PA 18103

CompuServe 73677,135  
Prodigy GRHD27A

Little Orphan  
**Annie**